

Postal Code 78752

Residential Statistics



December 2021

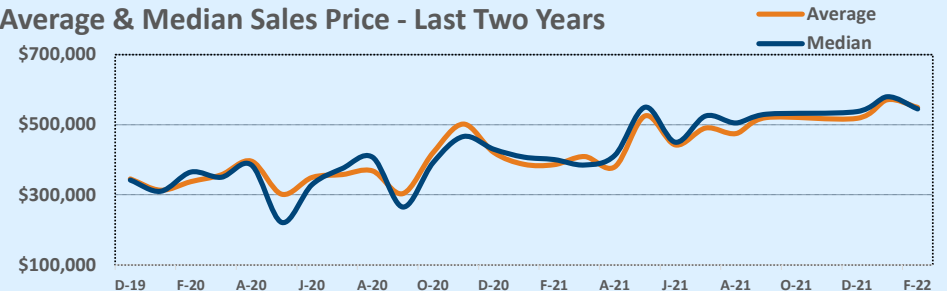
Listings	This Month			Year-to-Date		
	Dec 2021	Dec 2020	Change	2021	2020	Change
Single Family Sales	10	20	-50.0%	110	120	-8.3%
Condo/TH Sales	8	5	+60.0%	73	47	+55.3%
Total Sales	18	25	-28.0%	183	167	+9.6%
New Homes Only	5	3	+66.7%	23	20	+15.0%
Resale Only	13	22	-40.9%	160	147	+8.8%
Sales Volume	\$9,328,500	\$10,526,750	-11.4%	\$85,224,509	\$63,362,582	+34.5%
New Listings	8	7	+14.3%	200	191	+4.7%
Pending	--	--	--	--	--	--
Withdrawn	1	1	--	7	12	-41.7%
Expired	1	1	--	7	12	-41.7%
Months of Inventory	0.4	0.4	+561.1%	N/A	N/A	--

Average	This Month			Year-to-Date		
	Dec 2021	Dec 2020	Change	2021	2020	Change
List Price	\$524,444	\$423,216	+23.9%	\$451,347	\$380,784	+18.5%
List Price/SqFt	\$417	\$311	+34.0%	\$372	\$295	+26.2%
Sold Price	\$518,250	\$421,070	+23.1%	\$465,708	\$379,417	+22.7%
Sold Price/SqFt	\$411	\$310	+32.7%	\$383	\$294	+30.3%
Sold Price / Orig LP	99.0%	99.6%	-0.6%	103.6%	99.6%	+3.9%
Days on Market	31	20	+51.4%	18	27	-35.7%

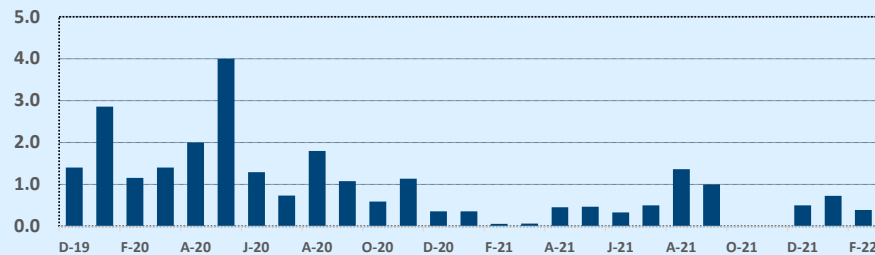
Median	This Month			Year-to-Date		
	Dec 2021	Dec 2020	Change	2021	2020	Change
List Price	\$562,399	\$439,900	+27.8%	\$475,000	\$378,000	+25.7%
List Price/SqFt	\$422	\$317	+33.1%	\$350	\$298	+17.2%
Sold Price	\$537,500	\$430,000	+25.0%	\$480,000	\$378,000	+27.0%
Sold Price/SqFt	\$427	\$316	+35.2%	\$364	\$298	+22.0%
Sold Price / Orig LP	98.9%	100.0%	-1.1%	101.1%	100.0%	+1.1%
Days on Market	27	11	+140.9%	6	11	-45.5%

Price Range	This Month			Year-to-Date		
	New	Sales	DOM	New	Sales	DOM
\$149,999 or under	--	--	--	--	1	169
\$150,000- \$199,999	--	--	--	8	9	9
\$200,000- \$249,999	--	--	--	15	11	15
\$250,000- \$299,999	1	--	--	10	13	9
\$300,000- \$349,999	--	1	32	8	12	20
\$350,000- \$399,999	--	2	56	9	11	35
\$400,000- \$449,999	1	3	21	21	16	22
\$450,000- \$499,999	--	1	12	34	25	21
\$500,000- \$549,999	--	2	22	25	34	11
\$550,000- \$599,999	1	5	40	35	20	21
\$600,000- \$699,999	3	4	24	18	19	15
\$700,000- \$799,999	2	--	--	11	9	8
\$800,000- \$899,999	--	--	--	3	2	33
\$900,000- \$999,999	--	--	--	1	--	--
\$1M - \$1.99M	--	--	--	2	1	4
\$2M - \$2.99M	--	--	--	--	--	--
\$3M+	--	--	--	--	--	--
Totals	8	18	31	200	183	18

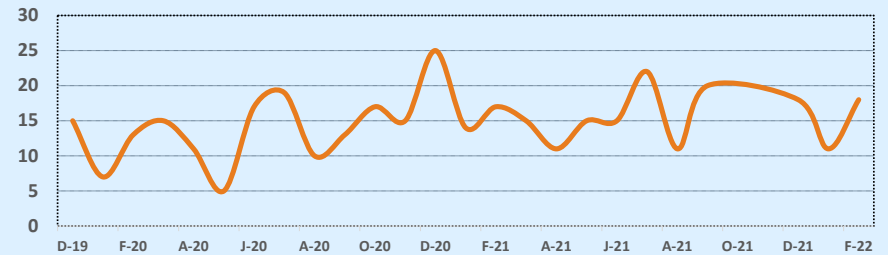
Average & Median Sales Price - Last Two Years



Months of Inventory - Last Two Years



Number of Sales - Last Two Years



Based on information from the Austin Board of REALTORS® (alternatively, from ACTRIS). Neither the Board nor ACTRIS guarantees or is in any way responsible for its accuracy. The Austin Board of REALTORS®, ACTRIS and their affiliates provide the MLS and all content therein "AS IS" and without any warranty, express or implied. Data maintained by the Board or ACTRIS may not reflect all real estate activity in the market.